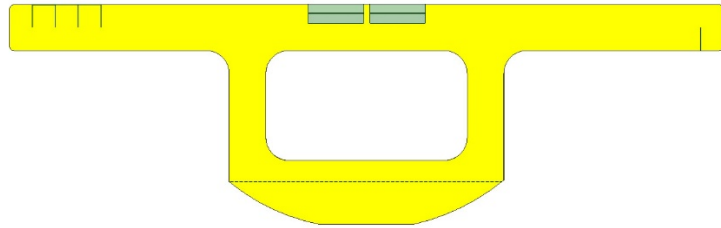


Face Shield for one time usage- *instructions*

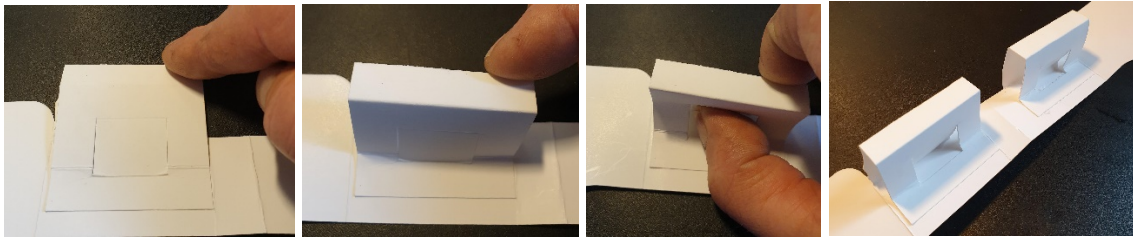
Fold out the long flaps. The flaps have some cut slots for different head sizes.
The Plastic window is attached on the inside to be turned closest to the face..



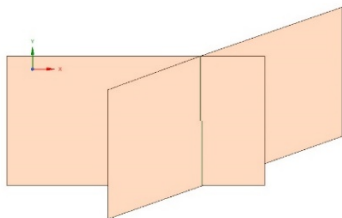
The face shield has two supports which should be folded out to keep the window away from the nose.

See photos. Press from below and push the locking flap in the middle.

The shield can be made flat again by carefully pushing out the locking flap again.



The face shield can be folded slightly in the middle. Use the cut slot most convenient.



Scan QR-code for website.

The Carton part of the face shield is made of food safe Carton Board and is fully recyclable.

The Plastic window part is made of PET and is also recyclable.

The plastic window can be wiped clean if hygienic standards are observed.

The face shield is not made for usage within the Health Care organizations.

The Face shield has been developed in Sweden by ArapakAB/Arabox.se and EMP AB.

info@arabox.se, Tel +46705782119 info@emp.se

www.arapak.se